

# SCHEDULE A MAP 17

By-Law No. 6-2003 as amended  
by By-Law No. 44-2003

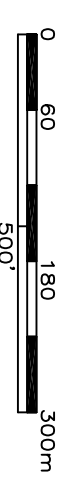
Date Passed July 9, 2003

Mayor Larry J Miller

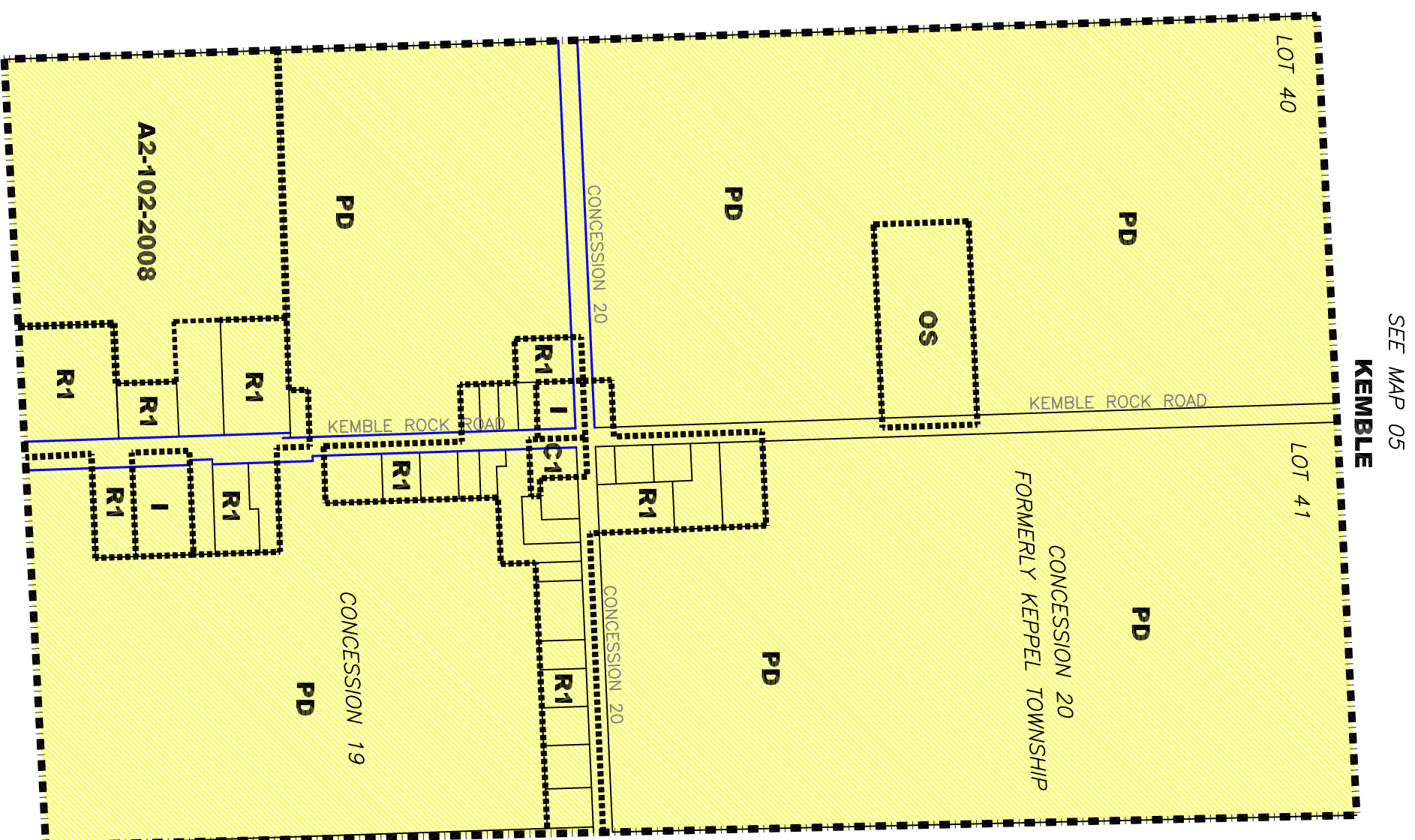
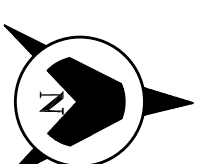
Deputy-Clerk Bruce Hoffman

## ZONES

- A1** General Rural
- A2** Restricted Rural
- R1** General Residential
- R2** Inland Lake and Shoreline Residential
- R3** Low Density Residential
- R4** Medium Density Residential
- R5** Medium-High Density Residential
- R6** Mobile Home Park
- C1** General Commercial
- C2** Rural Commercial
- C3** Tent and Trailer Campground
- C4** Space Extensive Commercial
- M1** General Industrial
- M2** Extractive Industrial
- I** Institutional
- OS** Open Space
- EP** Environmental Protection
- PD** Planned Development
- Niagara Escarpment Development Control
- Wetland
- Hamlet
- 1 Zone Exception
- h Holding Provision
- Municipal Road
- County Road or Provincial Highway
- Other Right of Way or Road Allowance
- Waterway



JANUARY 22 2003 - CUESTA PLANNING  
AMENDED AUGUST 2008



SEE MAP 05  
**KEMBLE**