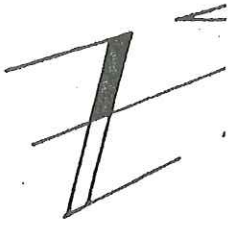
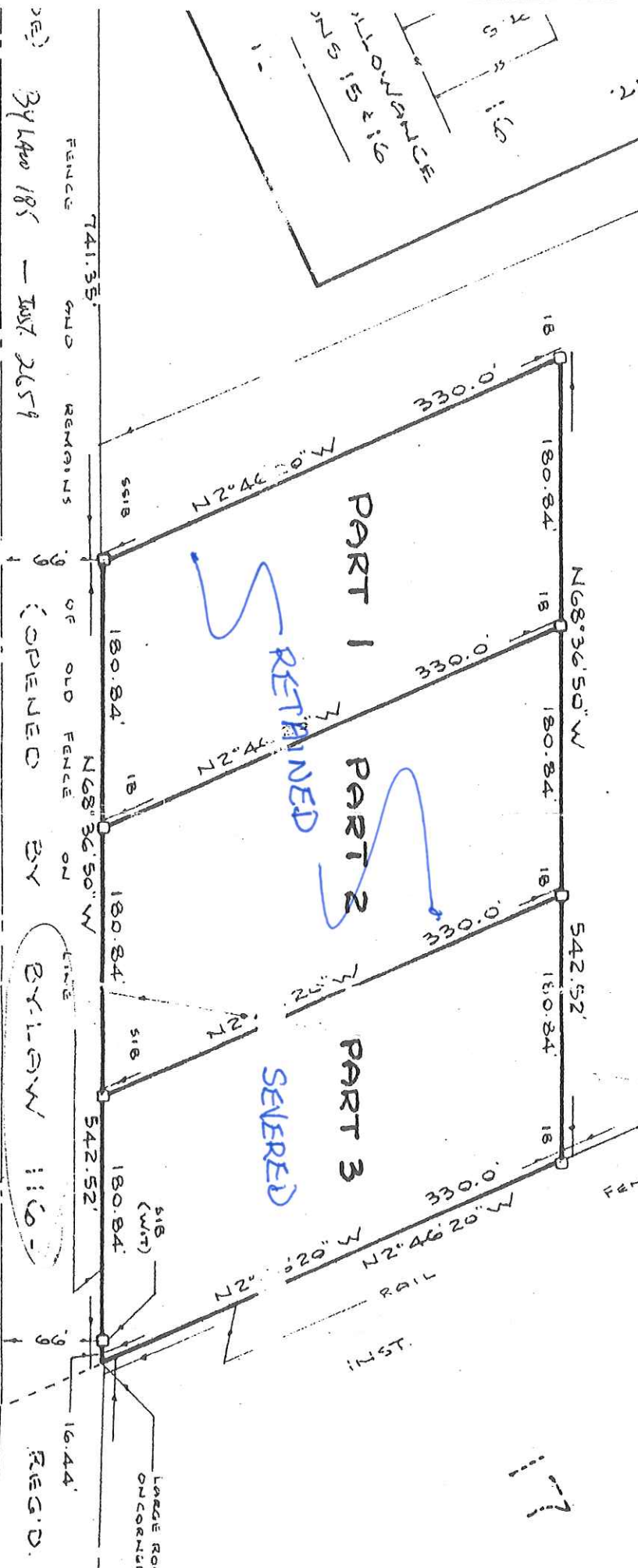


ESTABLISHING
7 16 COM. 12.



INST NO. 265057



PART 1
RETAINED

PART 2
RETAINED

PART 3
SEVERED

341.35' FENCE
741.35' FENCE
341.35' FENCE
741.35' FENCE

OPENED BY

BY-LAW

REG'D.

07

9

498.9

828.22'

263155

17