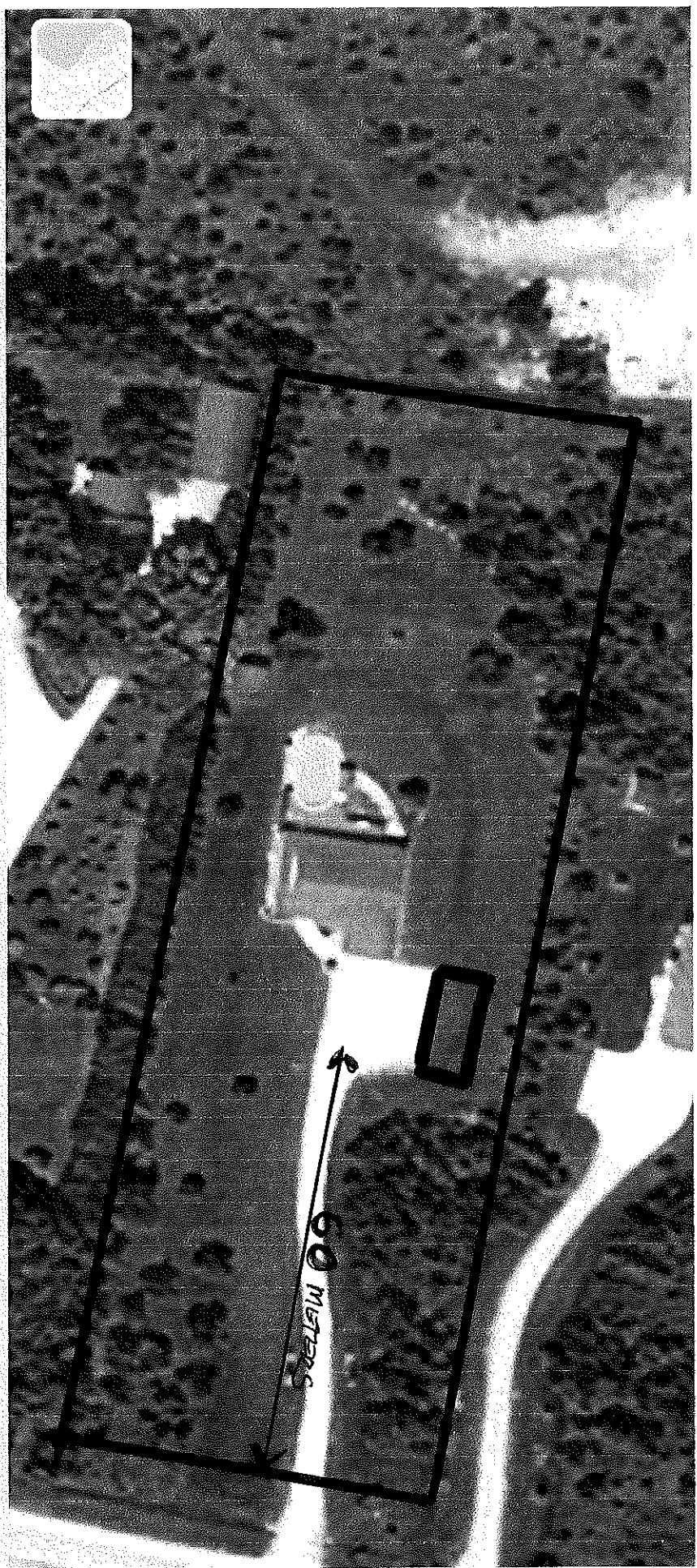
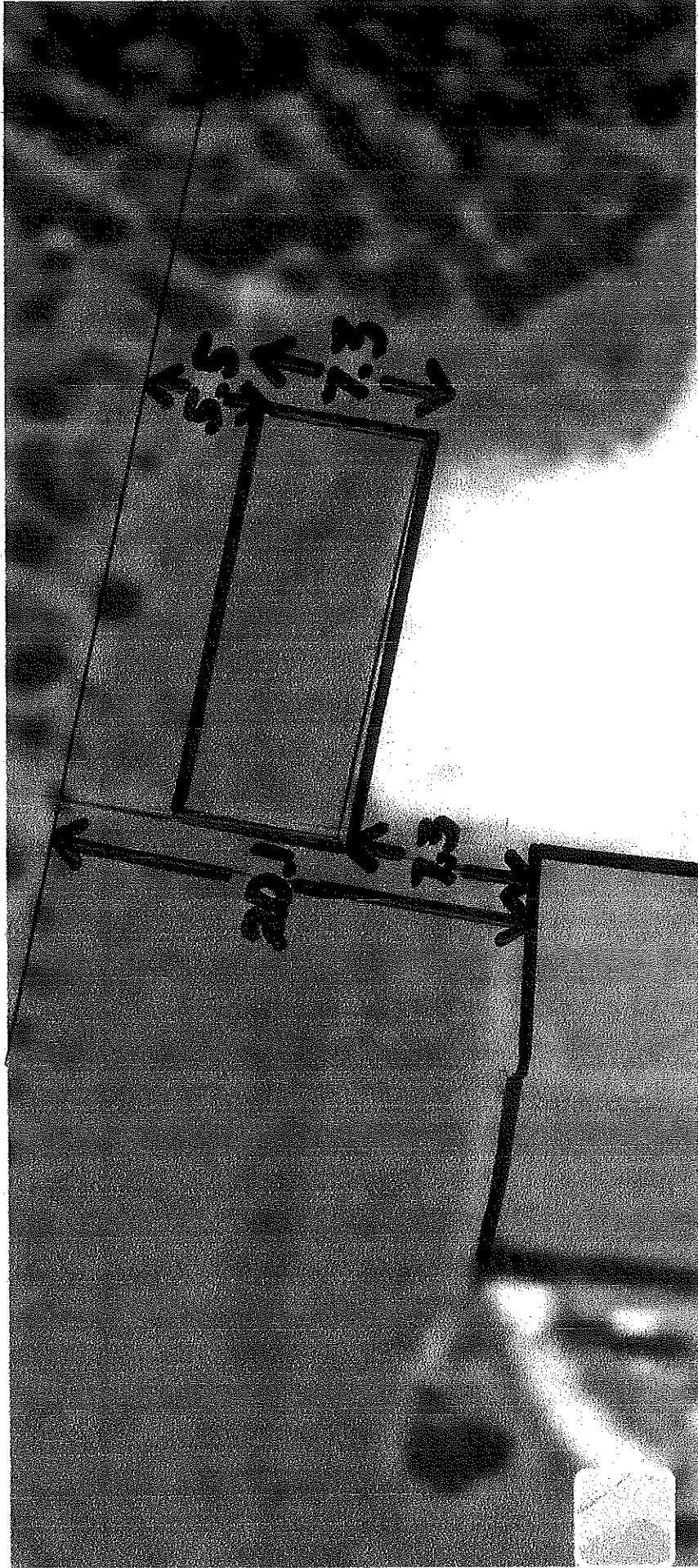
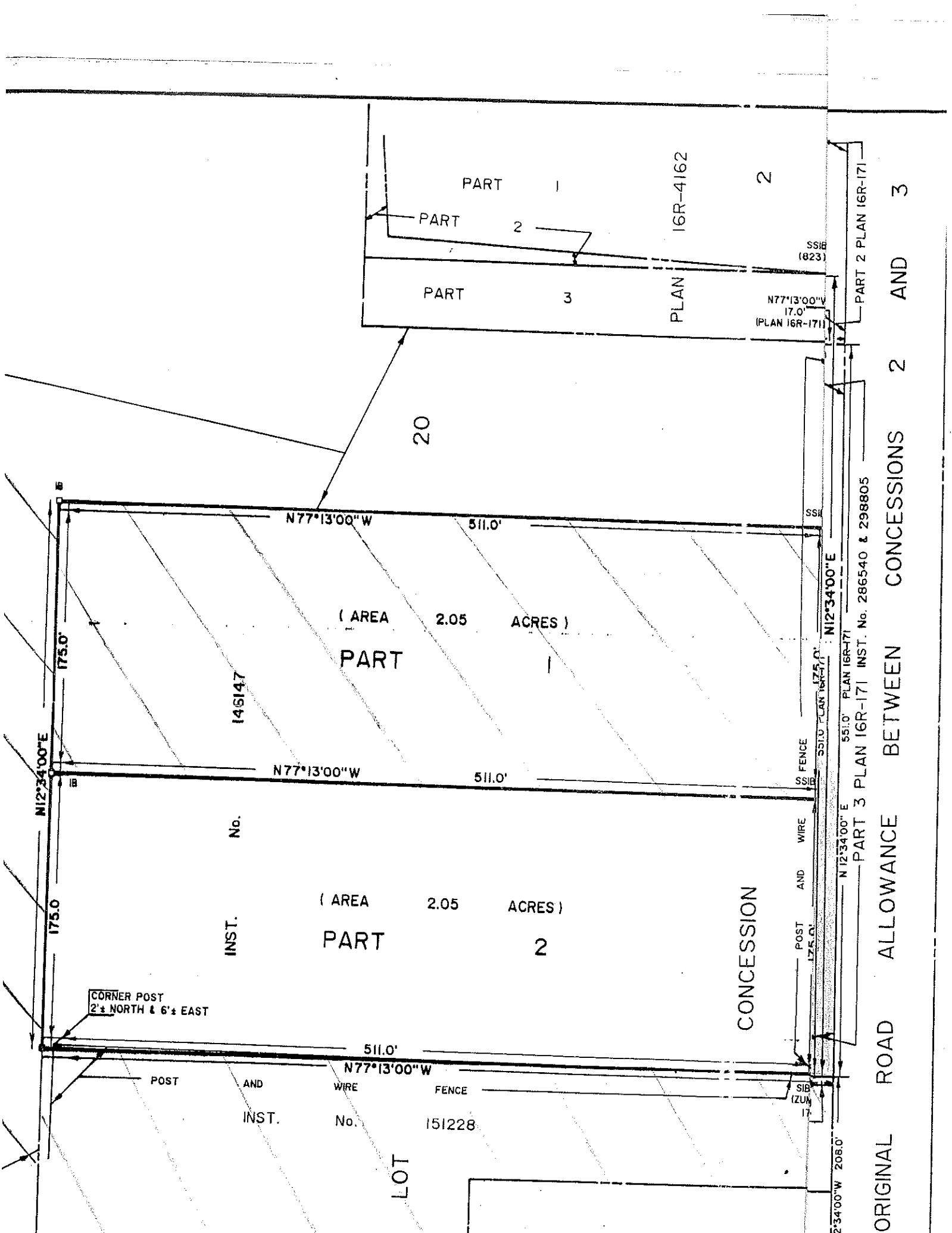


Historical Imagery < Jul 4, 2010 > >|





METERS



N12°34'00"E

175.0

175.0

175.0

B

IB

SIB

SIB

CORNER POST
2' ± NORTH & 6' ± EAST

POST AND WIRE FENCE INST. No. 151228

INST. No.

146147

(AREA 2.05 ACRES)
PART 2

(AREA 2.05 ACRES)
PART 1

N77°13'00"W 511.0'

N77°13'00"W 511.0'

511.0'
N77°13'00"W

20

PART 1
PART 2
PART 3

PLAN 16R-4162
PLAN 16R-171

N77°13'00"W
17.0'
(PLAN 16R-171)

CONCESSION

SSIB

SSIB

SIB (ZUM 17)

SSIB
175.0' PLAN 16R-171

N12°34'00"W 208.0'

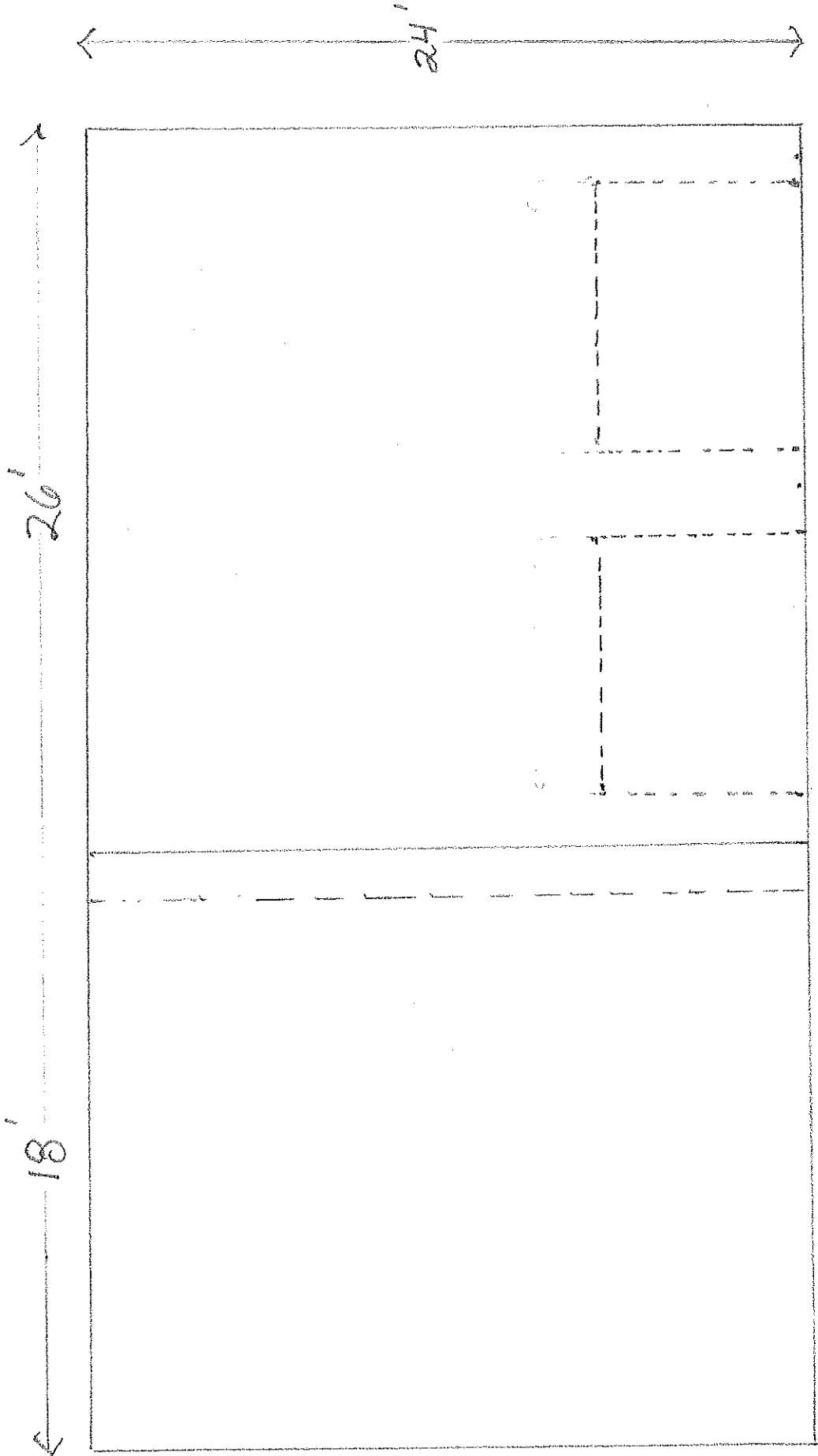
N12°34'00"E

SSIB (823)

PLAN 16R-171 INST. No. 286540 & 298805

PART 2 PLAN 16R-171

ORIGINAL ROAD ALLOWANCE BETWEEN CONCESSIONS 2 AND 3



18'

26'

24'

44'

24'

X

20'

- ROOF PITCH 6/12
- GARAGE DOORS 9' X 7' (2)
- GPT CEILINGS

- ALL INSULATED
- ALL DRYWALLED
- SOFFIT 16" WIDTH
- WRAP
- POLY

- WINDOWS DRANK
- VINYL SIDING - PEBBLE 6
- SINGLES - ICE/WATER
- DRAIN CURBED
- ETC