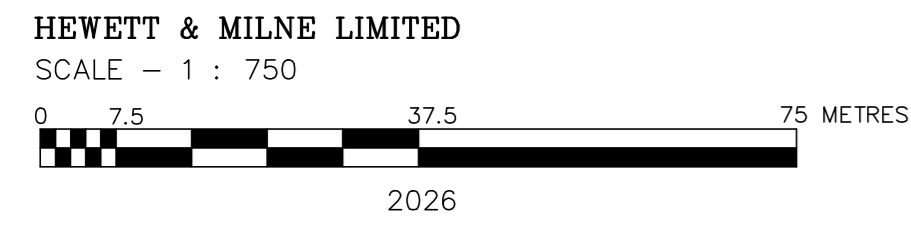


PLAN OF SURVEY
OF PART OF
LOT 33
COLPOY'S RANGE
GEOGRAPHIC TOWNSHIP OF KEPPEL
TOWNSHIP OF GEORGIAN BLUFFS
COUNTY OF GREY



LEGEND

■	DENOTES SURVEY MONUMENT FOUND
□	DENOTES SURVEY MONUMENT SET
SIB	DENOTES STANDARD IRON BAR
SSIB	DENOTES SHORT STANDARD IRON BAR
IB	DENOTES IRON BAR
WIT	DENOTES WITNESS
H&M	DENOTES HEWETT AND MILNE LTD., O.L.S.
D&E	DENOTES DINSMORE AND ENGLAND LTD., O.L.S.
P1	DENOTES PLAN 16R-10380

METRIC NOTE
DISTANCES AND COORDINATES SHOWN ON THIS PLAN ARE IN METRES AND CAN BE CONVERTED TO FEET BY DIVIDING BY 0.3048.

INTEGRATION DATA			INTEGRATION NOTES		
ALL COORDINATES ARE IN METRES, ARE DERIVED FROM GPS RTK OBSERVATIONS USING THE CAN-NET NETWORK AND ARE REFERRED TO UTM ZONE 17 (81° WEST LONGITUDE) NAD83(CSRG)(2010.0) COORDINATE VALUES ARE TO A RURAL ACCURACY IN ACCORDANCE WITH SECTION 14(2) OF O.REG 216/10.			BEARINGS ARE UNIVERSAL TRANSVERSE MERCATOR (UTM) GRID, DERIVED FROM NETWORK GPS OBSERVATIONS TRANSFERRED TO MONUMENTS 'A', 'B' AND 'C', SHOWN HEREON. THE UTM GRID BEARING BETWEEN POINTS 'A' AND 'B' IS N48°20'35"W, NAD83(CSRG)(2010.0), AND IS REFERRED TO THE CENTRAL MERIDIAN OF UTM ZONE 17 (81° WEST LONGITUDE) DISTANCES SHOWN ON THIS PLAN ARE GROUND AND CAN BE CONVERTED TO GRID BY MULTIPLYING BY THE COMBINED SCALE FACTOR OF 0.99956 FOR BEARING COMPARISONS, THE FOLLOWING ROTATIONS HAVE BEEN APPLIED		
POINT ID	NORTHING	EASTING	PLAN	ROTATION	DIRECTION
A	4961348.66	501798.71	P1	0°00'00"	COUNTER-CLOCKWISE
B	4960977.86	502215.48			
C	4961038.52	501808.28			
CAUTION: COORDINATES CANNOT, IN THEMSELVES BE USED TO RE-ESTABLISH CORNERS OR BOUNDARIES SHOWN ON THIS PLAN					

PLAN 16R-
RECEIVED AND DEPOSITED

DATE:.....

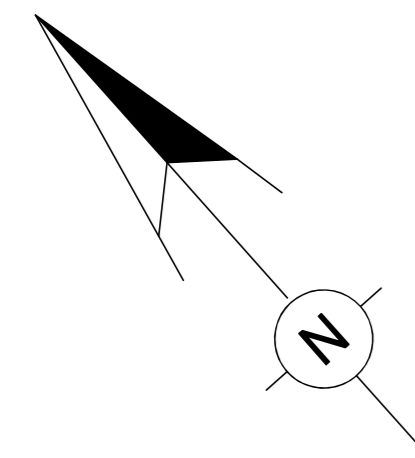
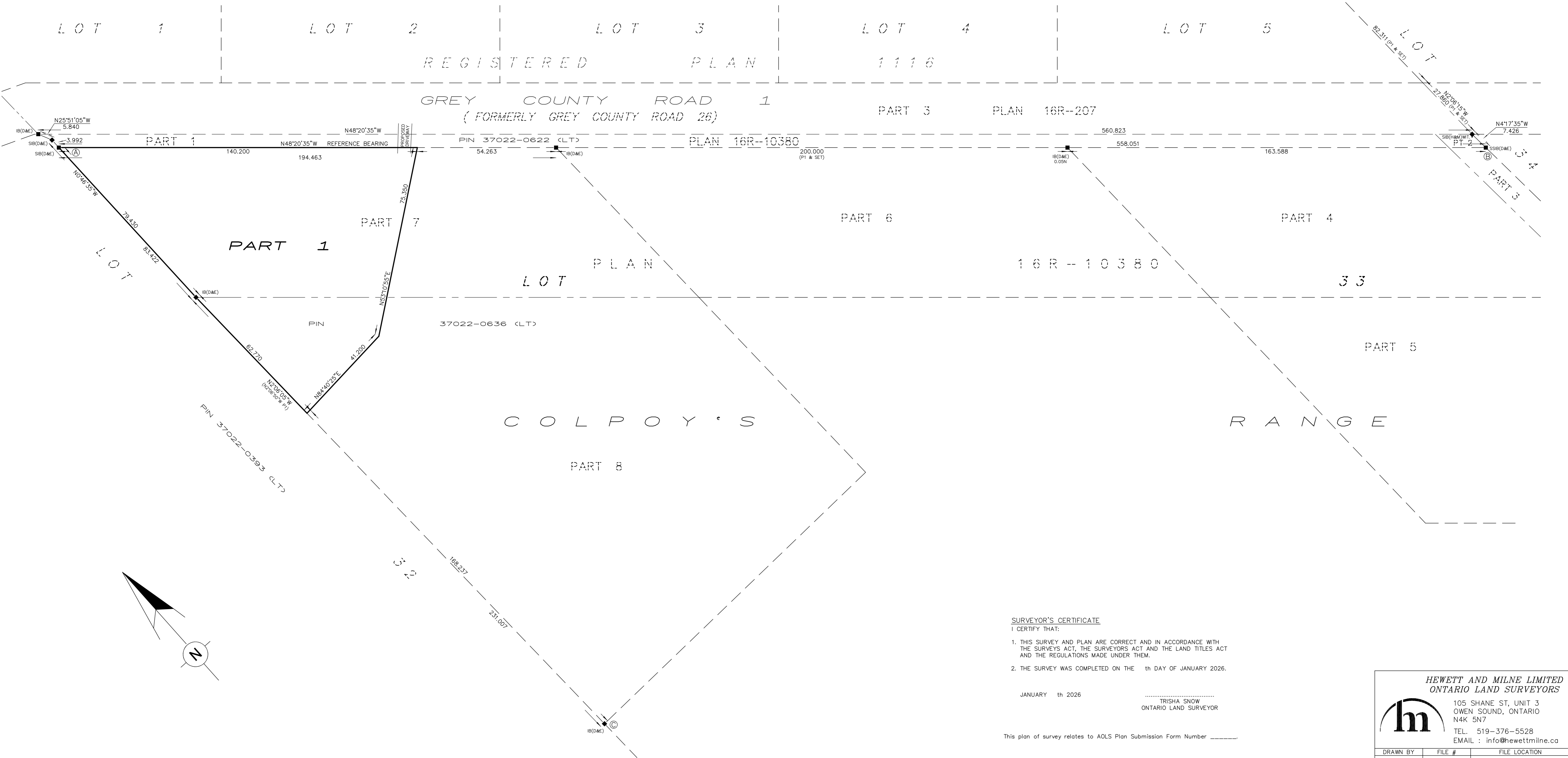
DATE:.....

TRISHA SNOW, O.L.S.

REPRESENTATIVE FOR LAND REGISTRAR FOR THE LAND TITLES DIVISION OF GREY (No. 16)

SCHEDULE			
PART	LOT	CONCESSION	PIN
1	PART OF 33	COLPOY'S RANGE	PART OF 37022-0636(LT)

DRAFT PLAN



SURVEYOR'S CERTIFICATE
I CERTIFY THAT:

- THIS SURVEY AND PLAN ARE CORRECT AND IN ACCORDANCE WITH THE SURVEYS ACT, THE SURVEYORS ACT AND THE LAND TITLES ACT AND THE REGULATIONS MADE UNDER THEM.
- THE SURVEY WAS COMPLETED ON THE _____th DAY OF JANUARY 2026.

JANUARY _____th 2026

TRISHA SNOW
ONTARIO LAND SURVEYOR

This plan of survey relates to AOLS Plan Submission Form Number _____

HEWETT AND MILNE LIMITED
ONTARIO LAND SURVEYORS

105 SHANE ST, UNIT 3
OWEN SOUND, ONTARIO
N4K 5N7
TEL: 519-376-5528
EMAIL: info@hewettmilne.ca

DRAWN BY	FILE #	FILE LOCATION
TB	25-192	53