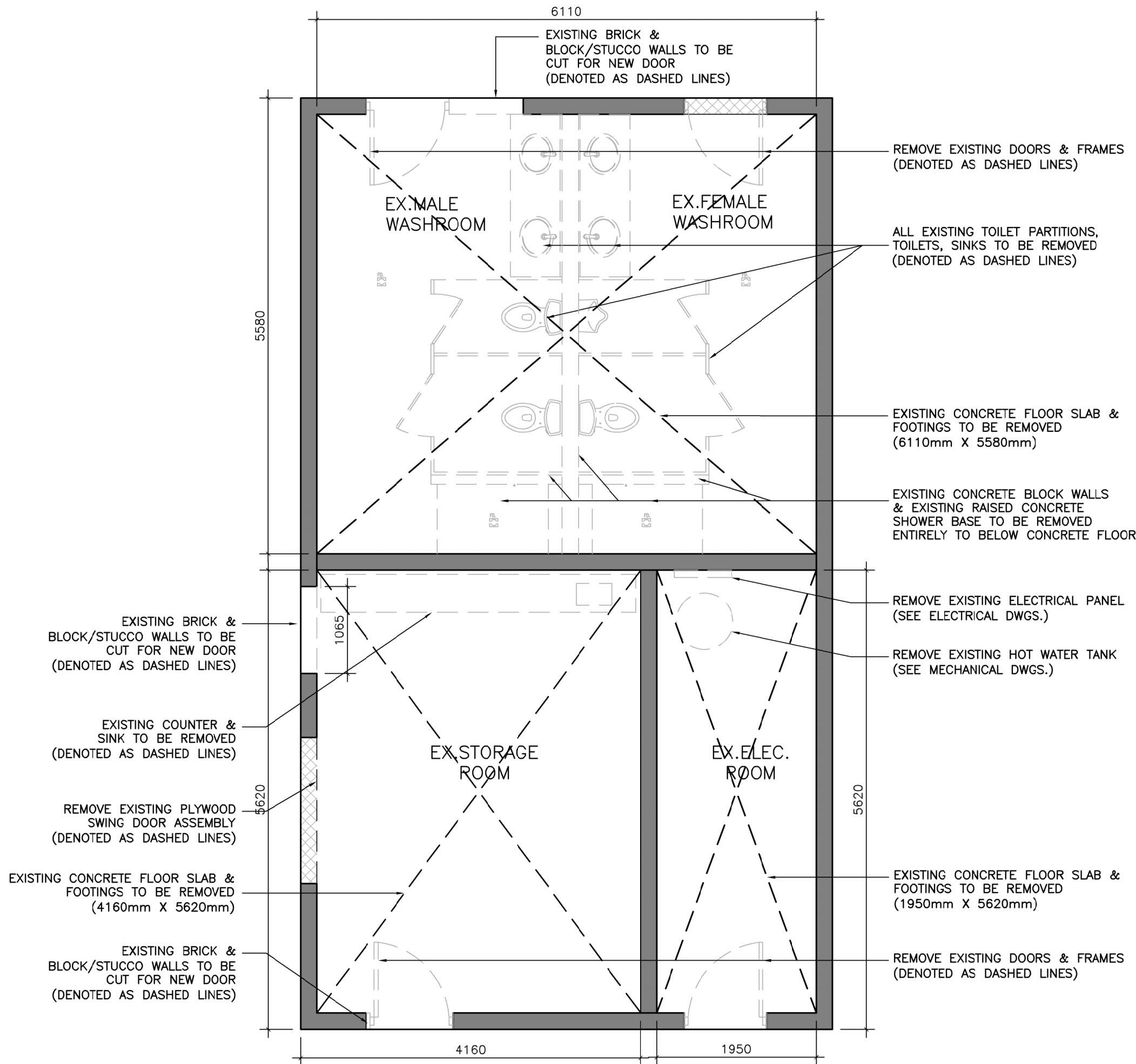
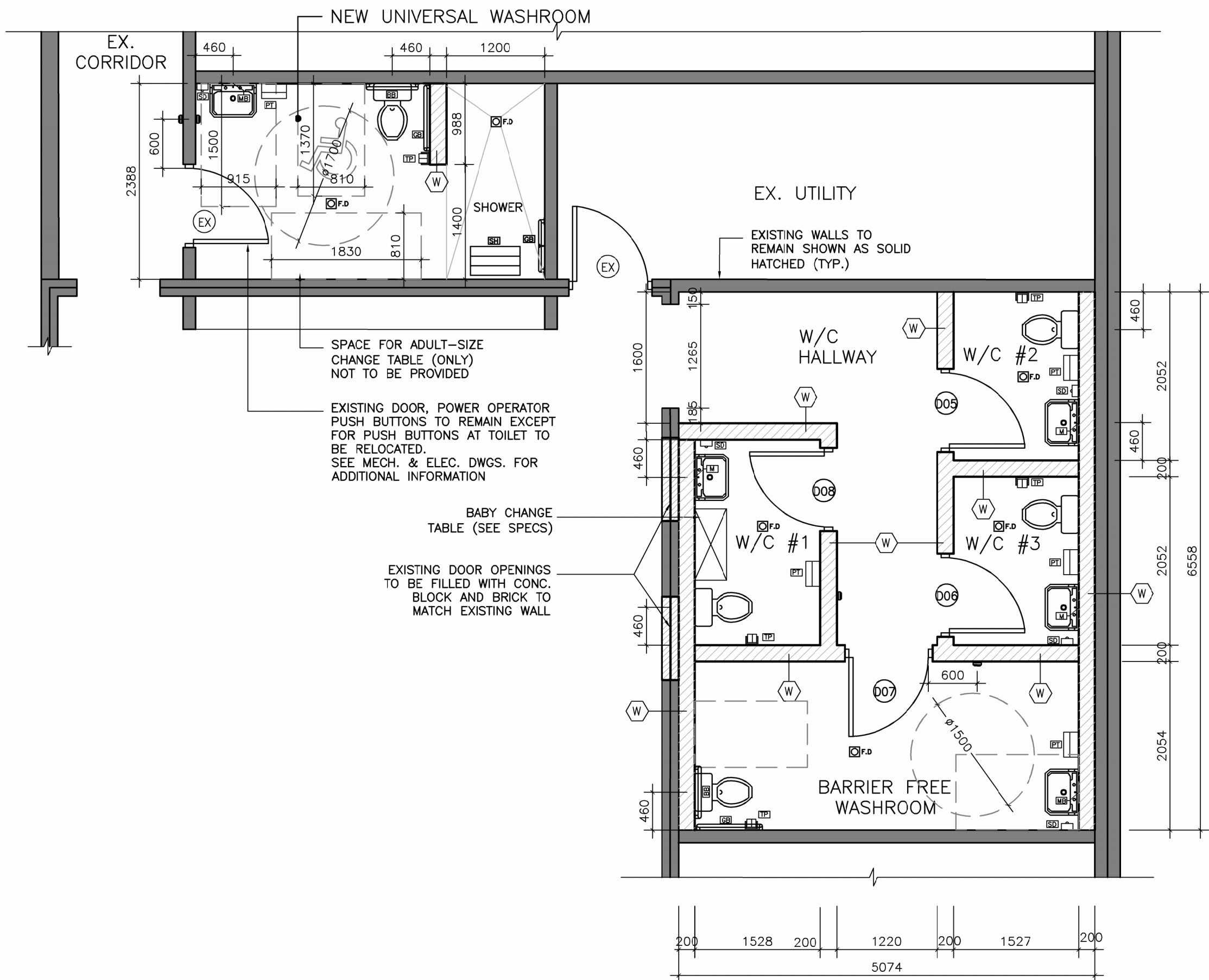


SHALLOW LAKE & DISRTICT COM. CEN. - DEMOLITION FLOOR PLAN

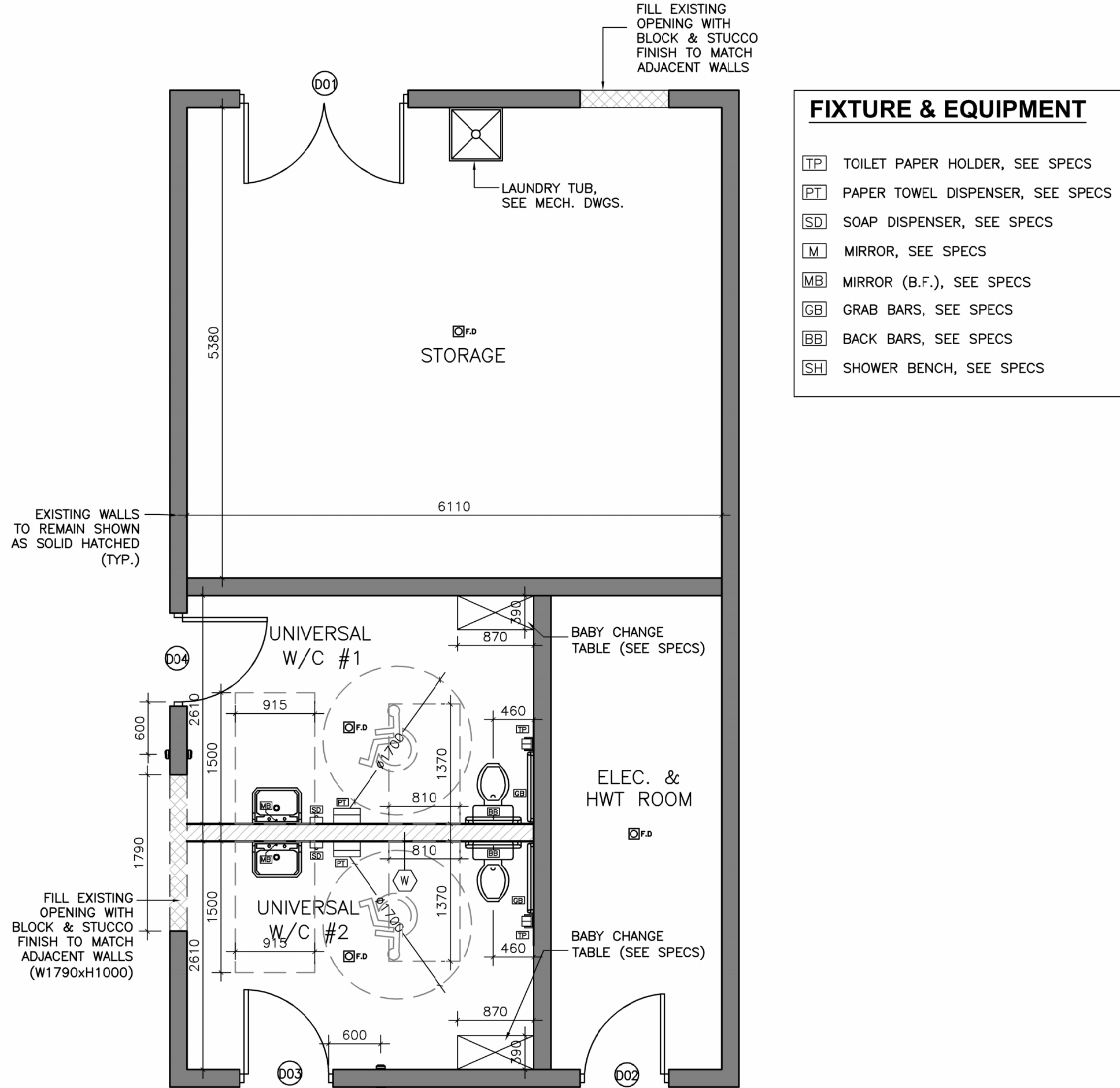
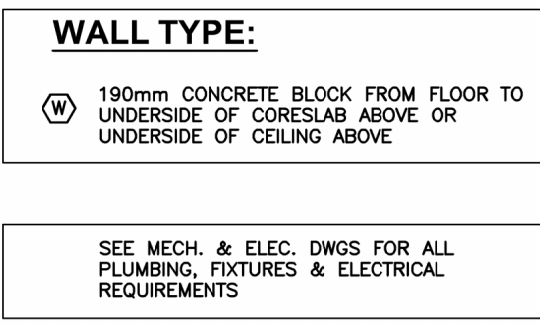
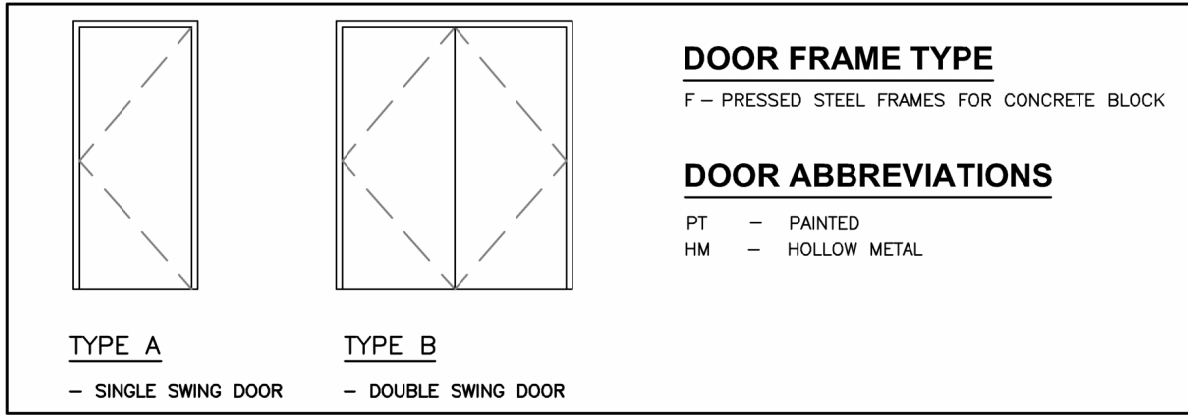


SHALLOW LAKE BALL DIAMOND/PARK WASHROOMS - DEMOLITION FLOOR PLAN



SHALLOW LAKE & DISTRICT COM. CEN. - NEW CONSTRUCTION FLOOR PLAN

DOOR SCHEDULE											
NO	LOCATION		DOOR				FRAME			REMARKS	
	FROM	TO	SIZE (W X H)	TYPE	MAT'L	FIN.	GLASS	TYPE	MAT'L		FIN.
D01	EXT.	W/C #1	1830 X 2135	B	HM	PT	-	F	HM	PT	WITH NECESSARY HARDWARE
D02	EXT.	ELEC. & HWT ROOM	915 X 2135	A	HM	PT	-	F	HM	PT	
D03	EXT.	UNIVERSAL W/C #2	965 X 2135	A	HM	PT	-	F	HM	PT	
D04	EXT.	UNIVERSAL W/C #1	965 X 2135	A	HM	PT	-	F	HM	PT	
D05	W/C HALLWAY	W/C #2	965 X 2135	A	HM	PT	-	F	HM	PT	
D06	W/C HALLWAY	W/C #3	965 X 2135	A	HM	PT	-	F	HM	PT	
D07	W/C HALLWAY	BARRIER FREE W/C	965 X 2135	A	HM	PT	-	F	HM	PT	
D08	W/C HALLWAY	W/C #1	965 X 2135	A	HM	PT	-	F	HM	PT	
NOTE: - ALL DOORS ACCESSIBLE TO HANDICAP SHALL BE PROVIDED WITH LEVERED TYPE HARDWARE.											



SHALLOW LAKE BALL DIAMOND/PARK WASHROOMS - NEW CONSTRUCTION FLOOR PLAN

The Design, including, but not limited to: Spatial Relationships, Orientation & General configuration of the project are the Copyright of the Architect.
Do Not Scale The Drawings.
All Drawings, Specifications And Related Documents Are The Copyright Of The Architect And Must Be Returned Upon Request.
Reproduction Of Drawings, Specifications And Related Documents In Part Or Whole Is Forbidden Without The Architects Written Permission.
This Drawing Is Not To Be Used For Construction Until Signed By The Architect.

No.	Issued For	Date
1	ISSUED FOR CLIENT	MAR. 24. 2025
2	ISSUED FOR CLIENT'S REVIEW	APR. 02. 2025
3	ISSUED FOR CLIENT'S REVIEW	APR. 04. 2025

alaimo
architecture inc.
202-8551 Weston Road
Woodbridge, ON L4L 9R4
P: (905) 856-2840
F: (905) 856-4912
info@alaimoarchitecture.com

DEMOLITION AND NEW CONSTRUCTION PLANS

Project
WASHROOM RENOVATIONS

500 PRINCESS ST. SHALLOW LAKE, ONTARIO
SHALLOW LAKE & DISTRICT COMMUNITY CENTRE

Scale
1 : 50
Issued by
F.A.
File No.
2025-001
Plot Date
2025-03-24